

Junior Master Gardener Curriculum (Post)

Office use only:

--	--	--	--	--	--	--	--	--	--

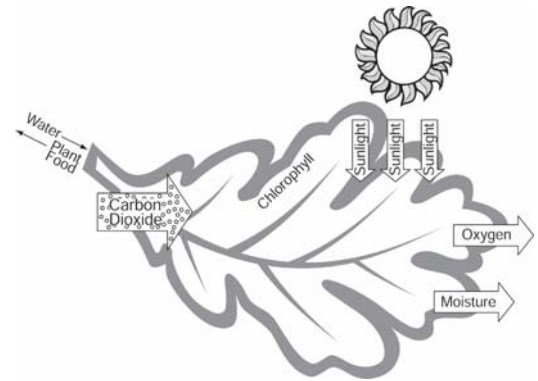
Chapter 1 - Plant Growth and Development

1. Which sentence describes one of the jobs that roots do for the plant?

- Roots create seed for the plant.
- Roots produce food for the plant.
- Roots absorb light from the sun.
- Roots hold the plant in place.

2. What gas do plants give off during photosynthesis?

- oxygen
- water
- sunlight
- carbon dioxide



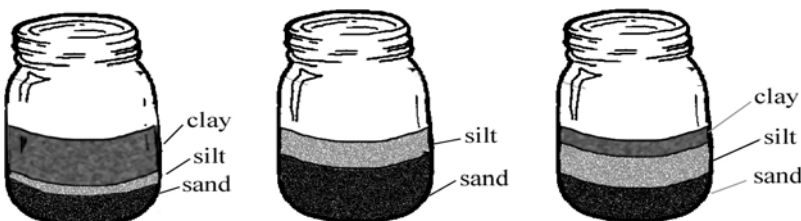
3. You can start a new plant from a seed or a cutting. This is called _____.

- Plant propagation
- Birth
- Stemming
- Growing

Chapter 2 - Soils and Water

1. Which jar shows a soil texture that would hold more water for plants to use?

- The jar with the most clay.
- The jar with the most sand.
- The jar with more silt than clay.
- All of the jars show a soil texture that hold enough water for plants.



MARKING INSTRUCTIONS

CORRECT: ● INCORRECT: ✗ ⊗ 🔄 🔄

2. What could you do to improve your soil to grow healthier plants?
- Remove sand and add lots of water
 - Add sand
 - Add clay
 - Add compost to the soil
3. Which part of the water cycle does water change from a liquid to a gas?
- condensation
 - precipitation
 - evaporation
 - run-off

Chapter 3 - Ecology and Environmental Horticulture

1. Which item below is the beginning of all food chains?
- consumers
 - animals
 - water
 - plants
2. What would probably happen after 10 cups of fertilizer were sprinkled on the soil all at one time around a plant and then the plant was watered?
- the plant could grow much taller from the extra nutrients
 - the soil could become polluted and harm the plant and animals nearby
 - the size of the plant would not change
 - the soil would give the plant only what it needs
3. What is a way that I can help the environment?
- Recycle paper and plastic
 - Select plants that grow well in my county
 - Use worms to recycle food waste
 - All of the above



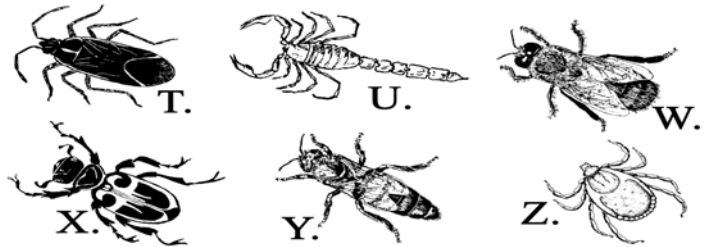
MARKING INSTRUCTIONS

CORRECT: ● INCORRECT: ✗ ⊗ 🚫 🚫

Chapter 4 - Insects and Diseases

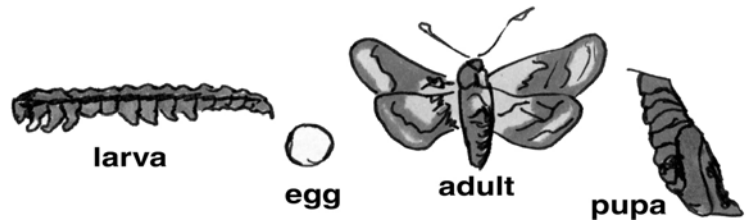
1. These creatures were captured with an insect trap. Which of the creatures prove that the trap does not just capture insects?

- T, X, Z
- W, Y
- T, W, X, Y
- U, Z



2. The picture below shows the different stages of metamorphosis of an insect. What is the correct order from start to finish?

- egg, pupa, adult, larva
- egg, larva, pupa, adult
- pupa, egg, adult, larva
- pupa, egg, larva, adult



3. When you notice insects on a plant, it is important to

- find out if the insect is harmful or helpful to the plant
- kill insects by using a pesticide
- remove insects safely by knocking them off with a strong water spray
- allow insects to remain on plant to pollinate flowers

Chapter 5 - Landscape Horticulture

1. Trees save energy and money because they

- Provide shade
- Drink lots of water
- Attract insects
- All of the above



MARKING INSTRUCTIONSCORRECT:  INCORRECT:   

2. An annual plant is
- A plant that grows all year long
 - A plant that grows back every year
 - A plant that must be planted each year
 - A plant that lives only one week
3. Adding mulch around your plants. . . .
- Conserves water
 - Makes a hiding place for bugs
 - Is too expensive
 - Is harmful to the environment

Chapter 6 - Fruits and Nuts

1. A fruit starts out as a
- Twig
 - Root
 - Stem
 - Flower
2. Which of the following is NOT made from a fruit or nut?
- Jelly
 - Peanut butter
 - Butter
 - Raisins
3. Seeds can travel to new locations when fruit. . . .
- Is eaten by animals
 - Drops to the ground and decays
 - Floats on water
 - All of the above



MARKING INSTRUCTIONS

CORRECT: ● INCORRECT: ✗ ⊗ 🚫 🚫

Chapter 7 - Vegetables and Herbs

1. A garden should receive
 - 30 minutes of sunlight every day
 - 1 hour of sunlight every day
 - 2-3 hours of sunlight every day
 - At least 6 hours of sunlight every day

2. You should eat at least____ servings of fruits and vegetables each day.
 - One
 - Five
 - Three
 - Twelve

3. To choose a healthy snack, look at the food label and select the snack that is
 - Low in fiber
 - High in fat
 - High in Vitamin A&C
 - High in sugar

